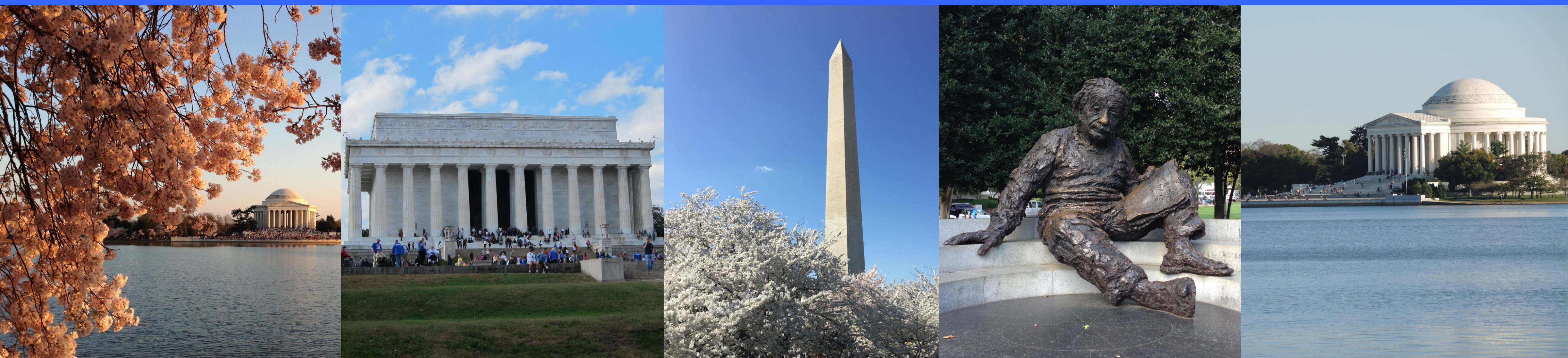


SEC 2016

The First IEEE/ACM Symposium on Edge Computing October 27-28, 2016, Washington DC, USA

<http://conferences.computer.org/SEC/>



“Edge computing” is a new paradigm in which the resources of a small data center are placed at the edge of the Internet, in close proximity to mobile devices, sensors, end users, and the emerging Internet of Things. Terms such as “cloudlets,” “micro data centers,” and “fog” have been used in the literature to refer to these small, edge-located data centers. They all represent counterpoints to the theme of consolidation and massive data centers that has dominated discourse in cloud computing. New challenges and opportunities arise as the consolidation of cloud computing meets the dispersion of edge computing. SEC2016 is a new conference that focuses on them.

General Chair

Xiuzhen Cheng, George Washington University

Program Chair

Mahadev Satyanarayanan, Carnegie Mellon University

Program Committee

Victor Bahl, Microsoft Research
Suman Banerjee, University of Wisconsin-Madison
Ramon Caceres, Google
Romit Roy Choudhury, University of Illinois at Urbana-Champaign
Landon Cox, Duke University
Nigel Davies, Lancaster University
Eyal de Lara, University of Toronto
Jason Flinn, University of Michigan
Kaustubh Joshi, AT&T Labs Research
Grace Lewis, Carnegie Mellon Software Engineering Institute
Qun Li, College of William & Mary
Sape Mullender, Cisco Systems
Klara Nahrstedt, University of Illinois at Urbana-Champaign
Pieter Simoens, Ghent University - iMinds
Padmanabhan Pillai, Intel Labs
Mahadev Satyanarayanan, Carnegie Mellon University (chair)
Rolf Schuster, Vodafone Group Services
Roy Want, Google
Yu Xiao, Aalto University
Lin Zhong, Rice University

Steering Committee

Victor Bahl, Microsoft Research
Flavio Bonomi, IoXWorks
Rong Chang, IBM Research
Dejan Milojicic, HP Labs
Michael Rabinovich, Case Western Reserve University
Weisong Shi, Wayne State University (chair)
Tao Zhang, Cisco

Local Arrangement Chair

Songqing Chen, George Mason University

Finance and Registration Chair

Qun Li, College of William & Mary

Sponsorship Chair

Grace Metri, Intel

Publicity Chairs

Amy Apon, Clemson University
Brian Blake, Drexel University
Jun Zou, Cisco

Panel Chair

Rong Chang, IBM Research

Webmaster

Ruian Li, George Washington University

Submission deadline: March 2, 2016

Acceptance notifications: June 15, 2016

Camera-ready deadline: July 13, 2016

<http://conferences.computer.org/SEC/>

